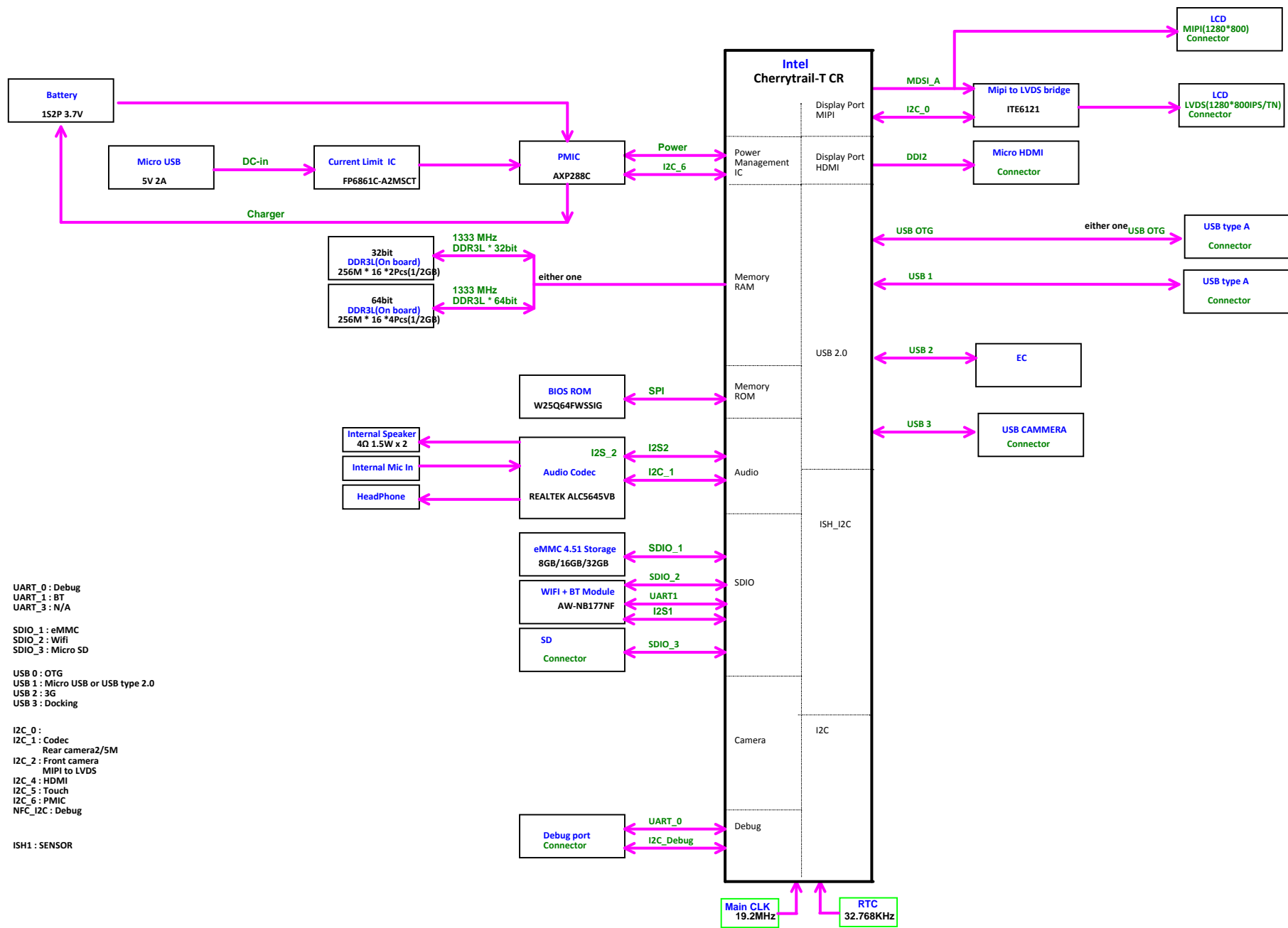


[illegible][illegible]

- [illegible]

[illegible][illegible][illegible][illegible][illegible]



UART_0 : Debug
UART_1 : BT
UART_3 : N/A

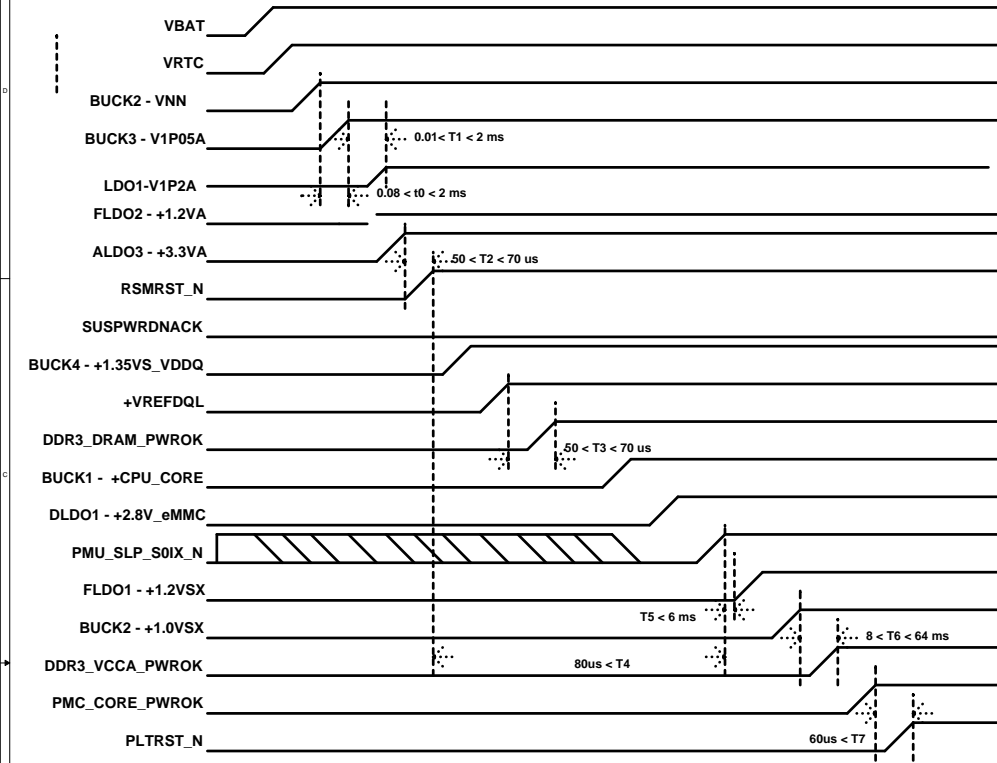
SDIO_1 : eMMC
SDIO_2 : Wifi
SDIO_3 : Micro SD

USB 0 : OTG
USB 1 : Micro USB or USB type 2.0
USB 2 : 3G
USB 3 : Docking

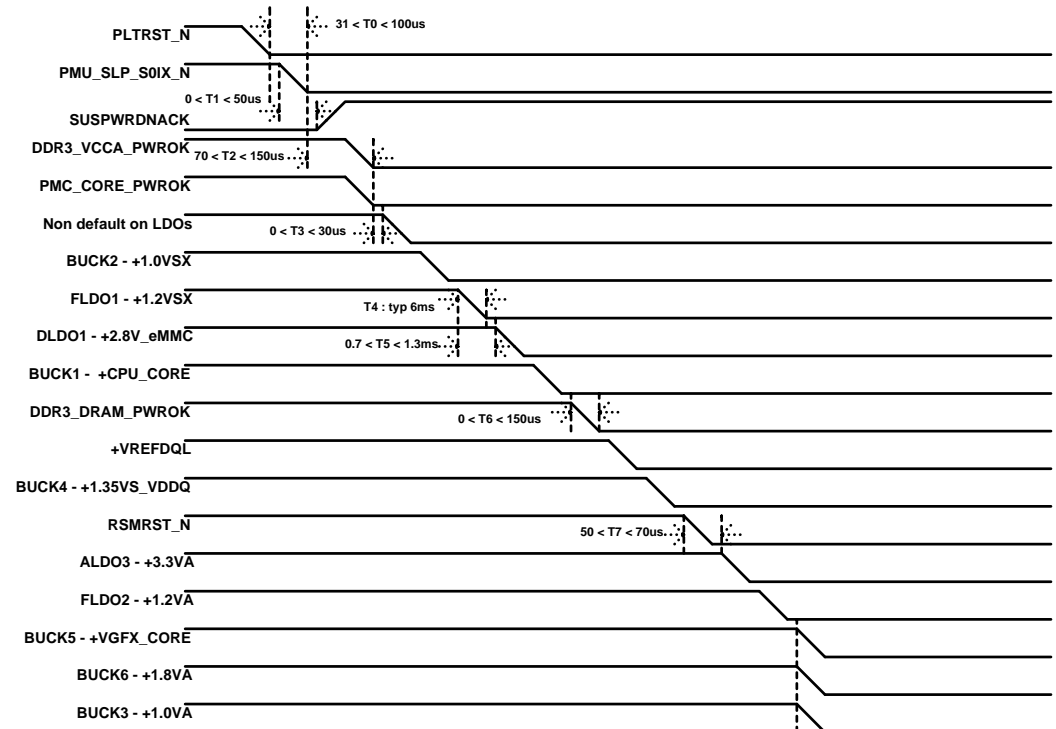
I2C_0 :
I2C_1 : Codec
Rear camera2/5M
I2C_2 : Front camera
MIPI to LVDS
I2C_4 : HDMI
I2C_5 : Touch
I2C_6 : PMIC
NFC_I2C : Debug

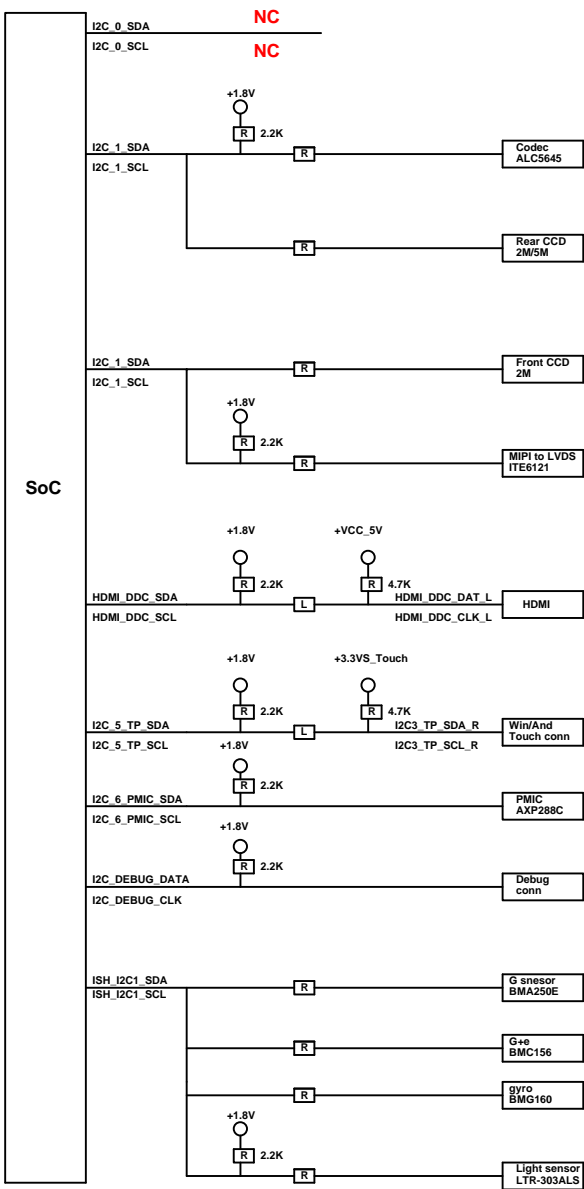
IS11 : SENSOR

Power up seunce

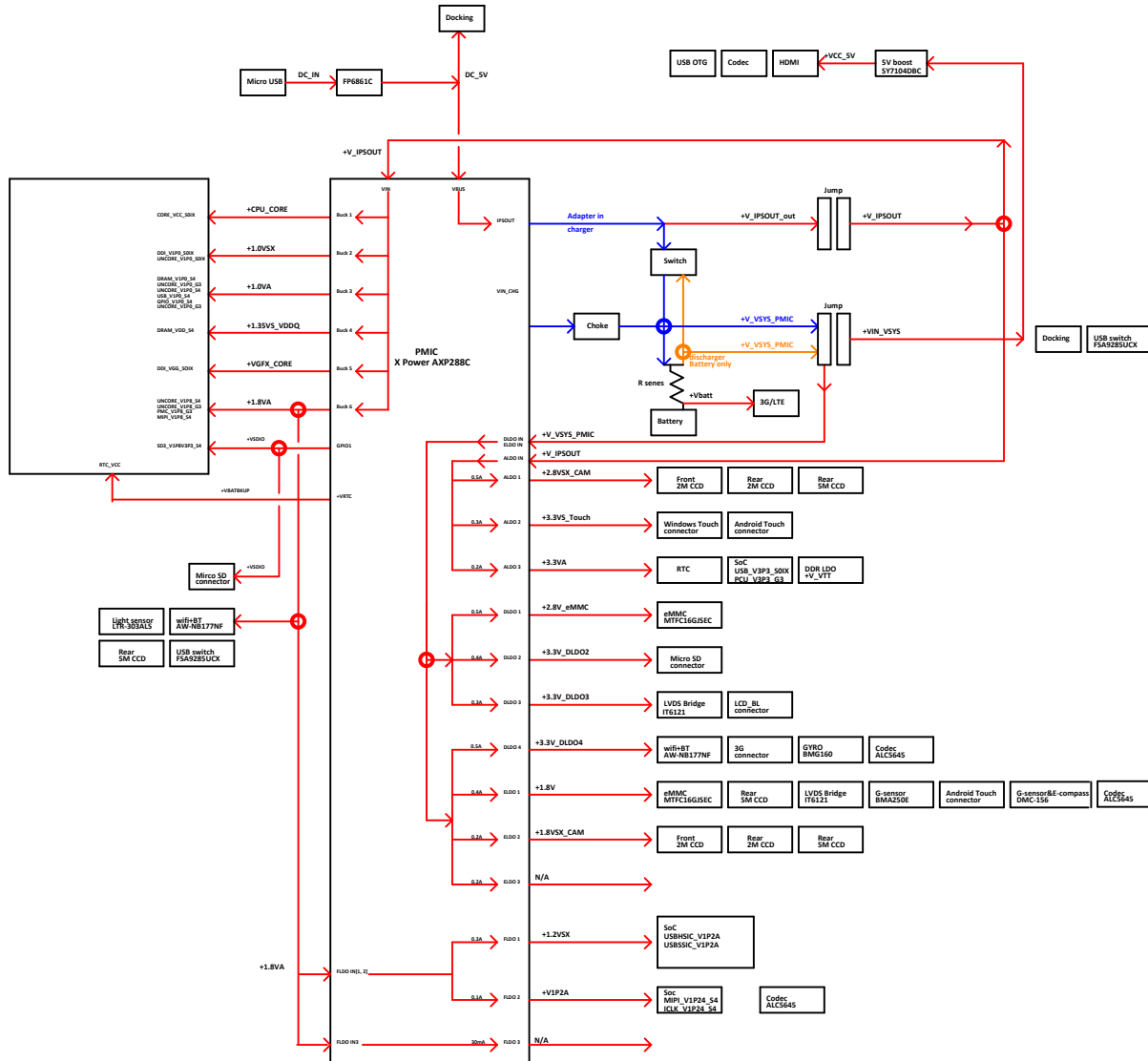


Power off seunce

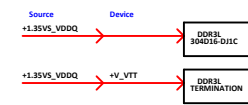




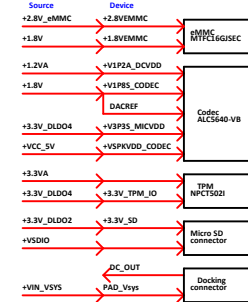
I2C Bus	Device	PartNumber	7 bit Address	Max Operating Freq.
I2C_0			0x??	KHz
I2C_1	Rear CCD 2M	Module	0x??	KHz
	Rear CCD 5M	Module	0x??	KHz
	Codec	ALC5645	0x??	KHz
I2C_2	MIPI to Lvds	ITE2161	0x??	KHz
	Front CCD 2M	Module	0x??	KHz
I2C_5	Touch Panel	Module	0x??	KHz
I2C_6	PMIC	AXP288	0x??	KHz
	G sensor	BMA250E	0x??	KHz
	G / gyro sensor	BMC156	0x??	KHz
ISH	Light sensor	LTR-303ALS	0x??	KHz



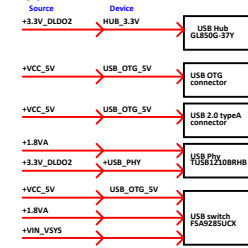
DDR3L



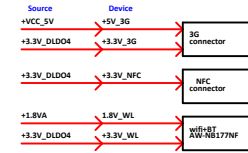
Key Parts



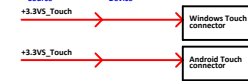
USB



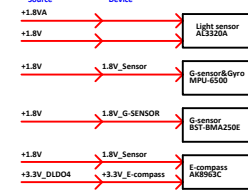
RF



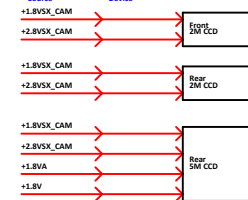
Touch



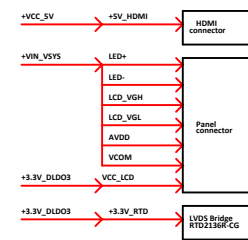
Sensor

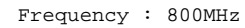


Camera

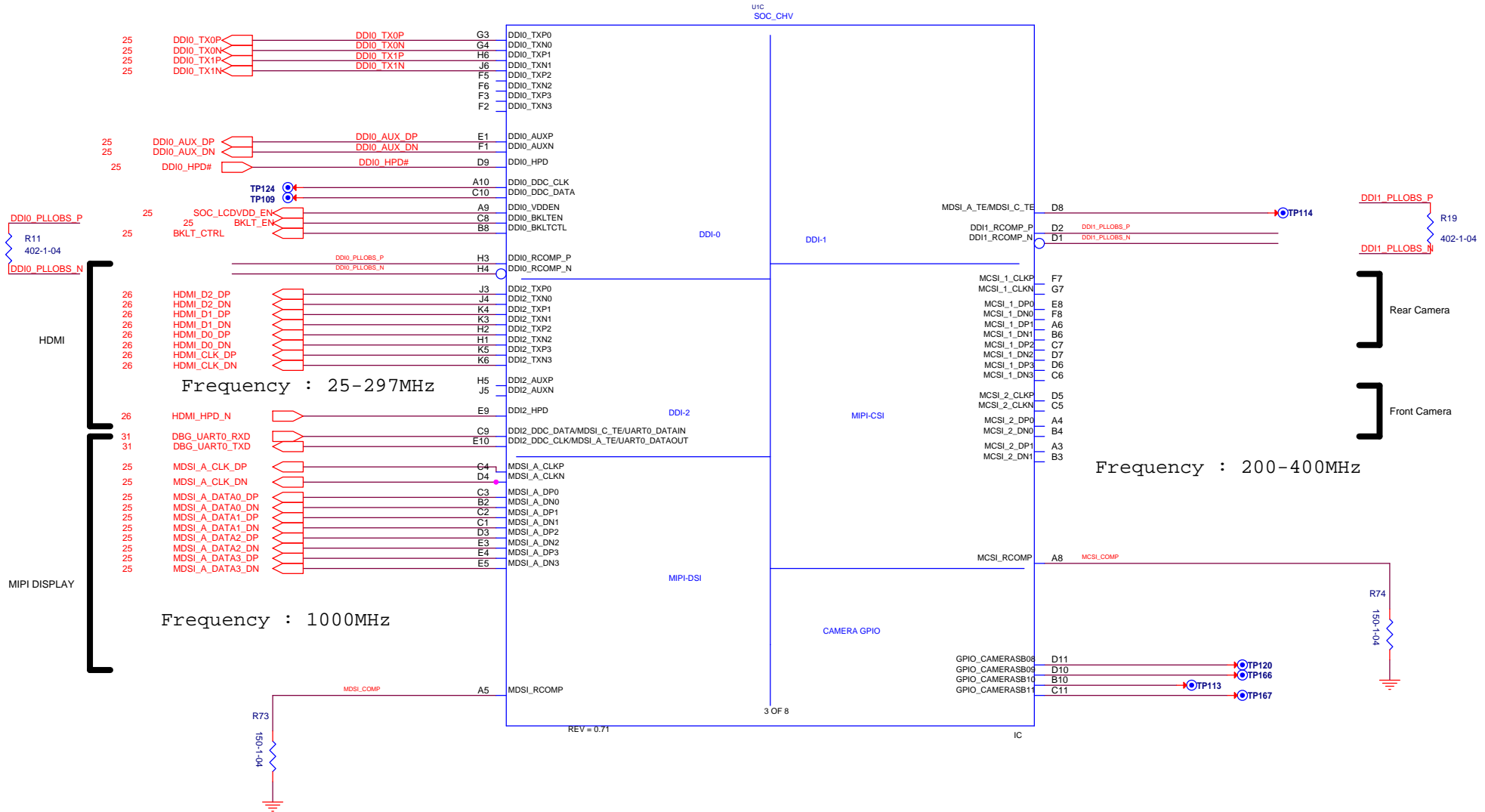


Display

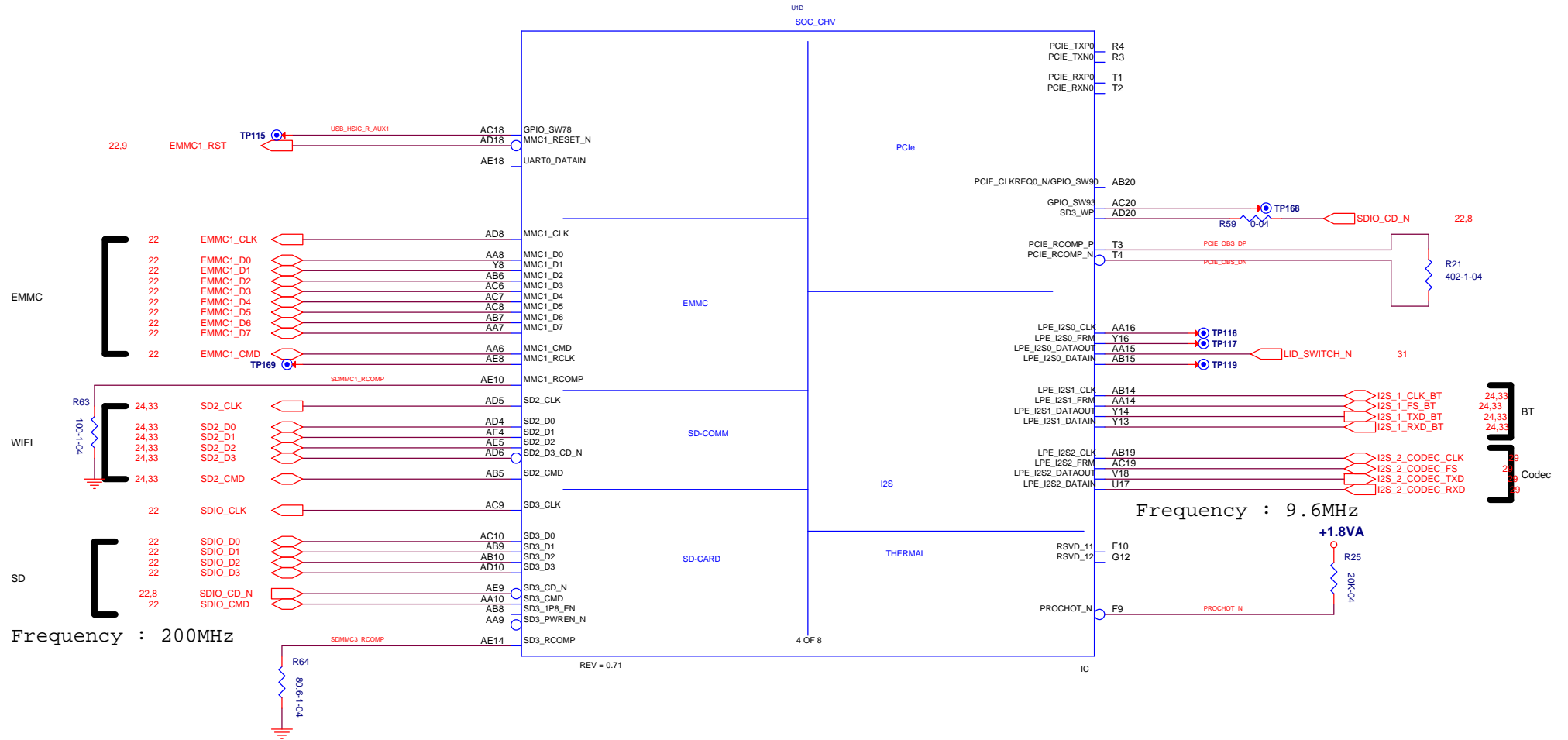


U1A
SOC_CHV

SOC : DISPLAY/CAMERA

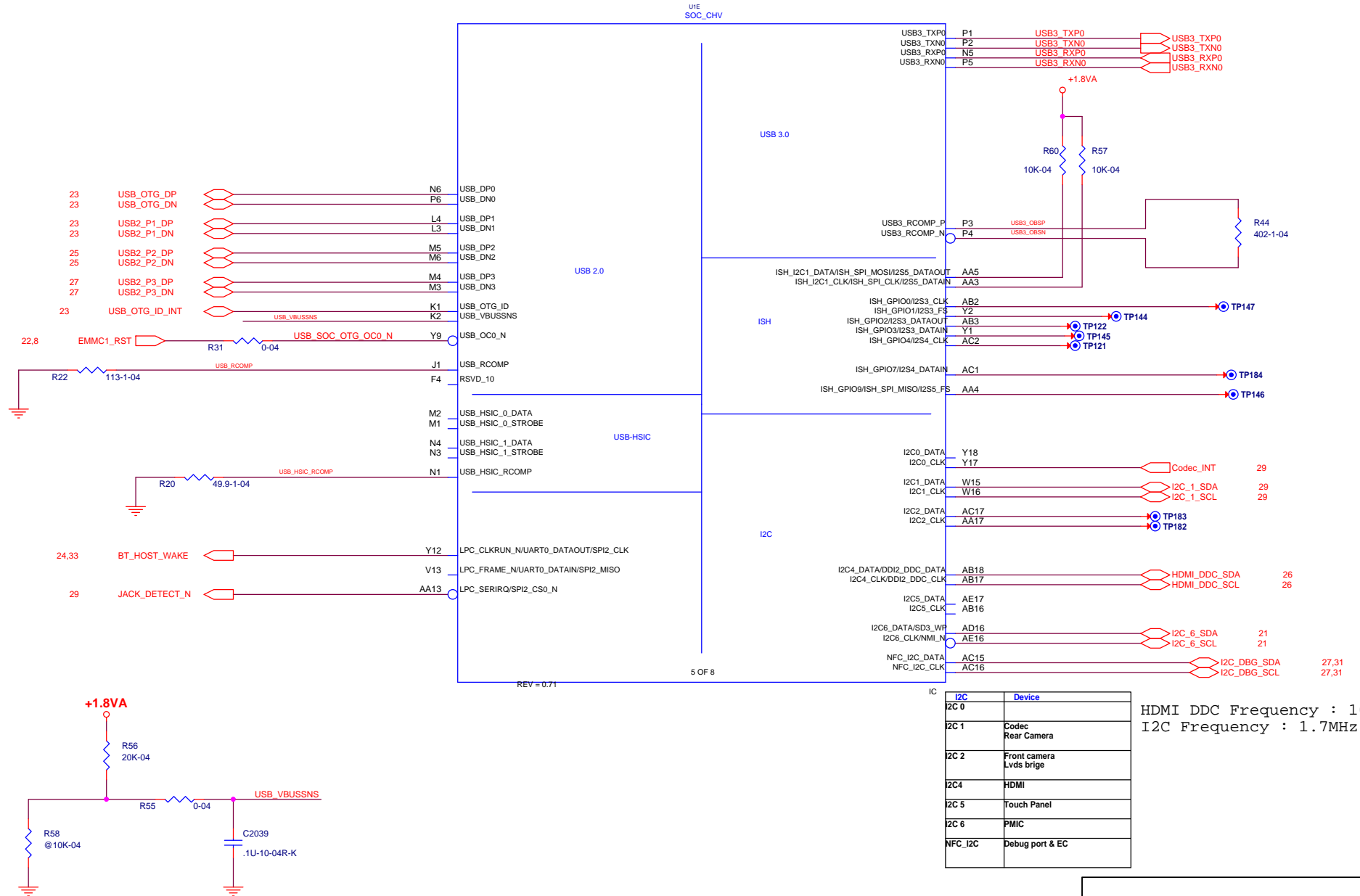


SOC : PCIE/SATA/SDMMC/AUDIO

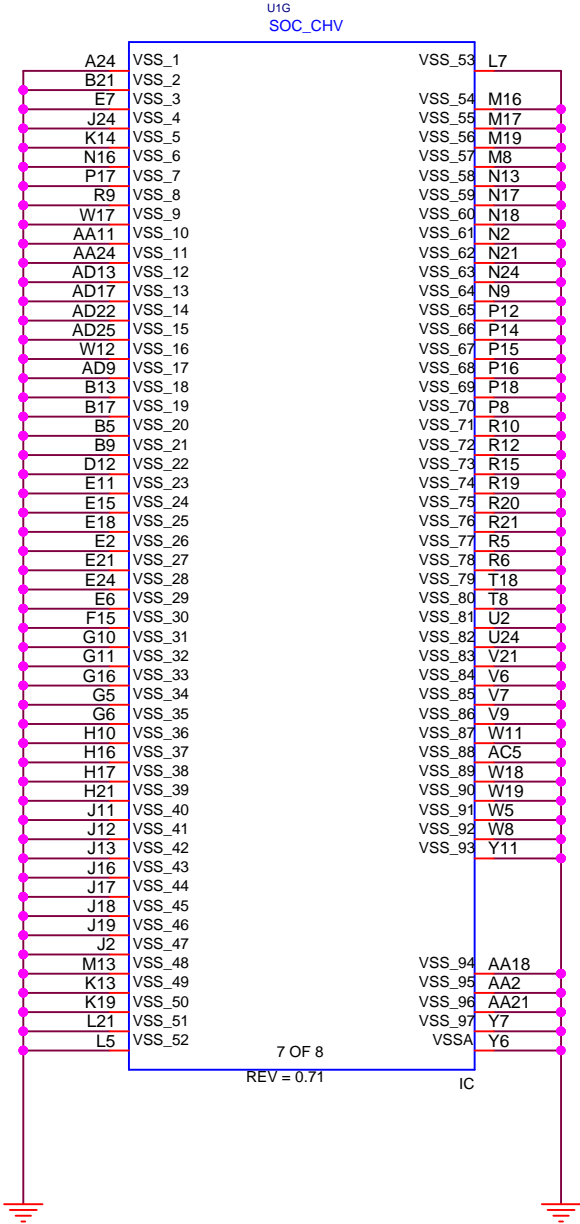


Title			
SOC_STORAGE_I2S			
Size	Document Number		Rev
A3	S14CT01		A
Date:	Friday, February 19, 2016	Sheet	8 of 35

SOC : USB/HSIC/I2C/ISH



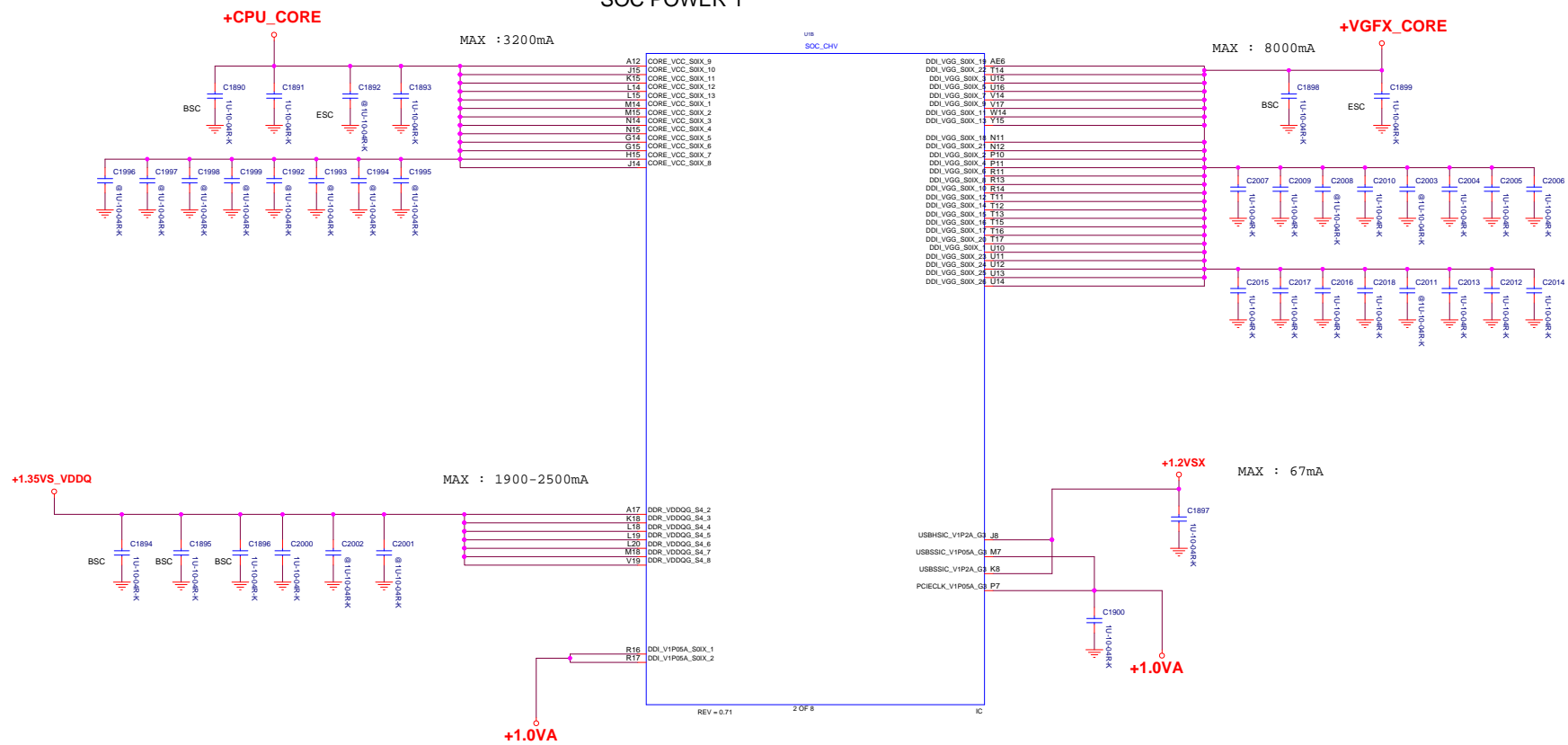
SOC : GND



- VSS_53 L7
- VSS_54 M16
- VSS_55 M17
- VSS_56 M19
- VSS_57 M8
- VSS_58 N13
- VSS_59 N17
- VSS_60 N18
- VSS_61 N2
- VSS_62 N21
- VSS_63 N24
- VSS_64 N9
- VSS_65 P12
- VSS_66 P14
- VSS_67 P15
- VSS_68 P16
- VSS_69 P18
- VSS_70 P8
- VSS_71 R10
- VSS_72 R12
- VSS_73 R15
- VSS_74 R19
- VSS_75 R20
- VSS_76 R21
- VSS_77 R5
- VSS_78 R6
- VSS_79 T18
- VSS_80 T8
- VSS_81 U2
- VSS_82 U24
- VSS_83 V21
- VSS_84 V6
- VSS_85 V7
- VSS_86 V9
- VSS_87 W11
- VSS_88 AC5
- VSS_89 W18
- VSS_90 W19
- VSS_91 W5
- VSS_92 W8
- VSS_93 Y11
- VSS_94 AA18
- VSS_95 AA2
- VSS_96 AA21
- VSS_97 Y7
- VSSA Y6

Title			SOC_GND		
Size	Document Number				Rev
A4	S14CT01				A
Date:	Friday, February 19, 2016		Sheet	11	of 35

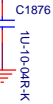
SOC POWER 1



SOC : POWER 2

MAX : 2500mA

+1.0VSX



+1.8VA MAX : 971mA

+VSDIO

BSC

MAX : 196mA

+3.3VA

+VBATBKUP

AE24 PWR_RSVD_OBS_4
A25 PWR_RSVD_OBS_1
J10 UNCORE_VNN_S4_1
L12 UNCORE_VNN_S4_2
L3 UNCORE_VNN_S4_3
M10 UNCORE_VNN_S4_4
M11 UNCORE_VNN_S4_5
M9 UNCORE_VNN_S4_6
N10 UNCORE_VNN_S4_7
P9 UNCORE_VNN_S4_9
V1 UNCORE_VNN_S4_11
J9 UNCORE_VNN_S4_8
K10 UNCORE_VNN_S4_10
K11 UNCORE_VNN_S4_12
K12 UNCORE_VNN_S4_13
K9 UNCORE_VNN_S4_16
L10 UNCORE_VNN_S4_14
L11 UNCORE_VNN_S4_15

L8 USB_V3P3A_G3
H12 USB_V1P8A_G3_2
H11 USB_V1P8A_G3_1

V10 UNCORE_V1P8A_G3_1
V15 UNCORE_V1P8A_G3_2
V16 UNCORE_V1P8A_G3_3
W9 UNCORE_V1P8A_G3_4

W13 SDIO_V3P3A_V1P8A_G3

A16 CORE_V1P05A_S0IX_3
G17 CORE_V1P05A_S0IX_4
G18 CORE_V1P05A_S0IX_5
K17 CORE_V1P05A_S0IX_1
L17 CORE_V1P05A_S0IX_2

U8 RTC_V3P3A_G5
V8 RTC_V3P3RTC_G5

SOC_CHV
U1H

PWR_RSVD_OBS_3 B25
PWR_RSVD_OBS_2 AE25

MPHY_1P05A_G3_1 N7
MPHY_1P05A_G3_2 N8

USB_VDDQ_G3 H7
DDI_USB_VDDQ_G3_1 K7

DDI_USB_VDDQ_G3_3 J7

DDI_USB_VDDQ_G3_2 H8

MIPI_V1P2A_G3_2 H9
MIPI_V1P2A_G3_1 G9

UNCORE_VSFR_G3_1 G8

F_V1P05A_S0IX_2 K16
F_V1P05A_S0IX_1 L16

UNCORE1_V1P05A_G3 T10

UNCORE2_V1P05A_G3 L13

UNCORE_V1P05A_S0IX_1 G13
UNCORE_V1P05A_S0IX_2 H13

DDR_V1P05A_G3_3 G19
DDR_V1P05A_G3_4 H18
DDR_V1P05A_G3_1 R18
DDR_V1P05A_G3_2 U18

F_V3P3A_G3 U7
F_V1P05A_G3_3 T9
F_V1P05A_G3_1 R7
F_V1P05A_G3_2 T7
F_V1P8A_G3 U9

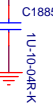
ICLK_VSFR_G3 R8
DDRSFR_VDDQG_S4 P19

UNCORE_VSFR_G3_2 M12

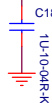
DDR_VDDQG_S4_1 T19

UNCORE_VSFR_G3_3 L6
CORE0_VSFR_G3 H14

+1.0VA



+1.35VS_VDDQ

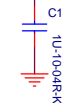
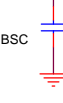


+1.2VSX

+1.35VS_VDDQ

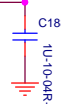


+1.0VA

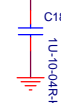


BSC

+1.35VS_VDDQ



+1.35VS_VDDQ



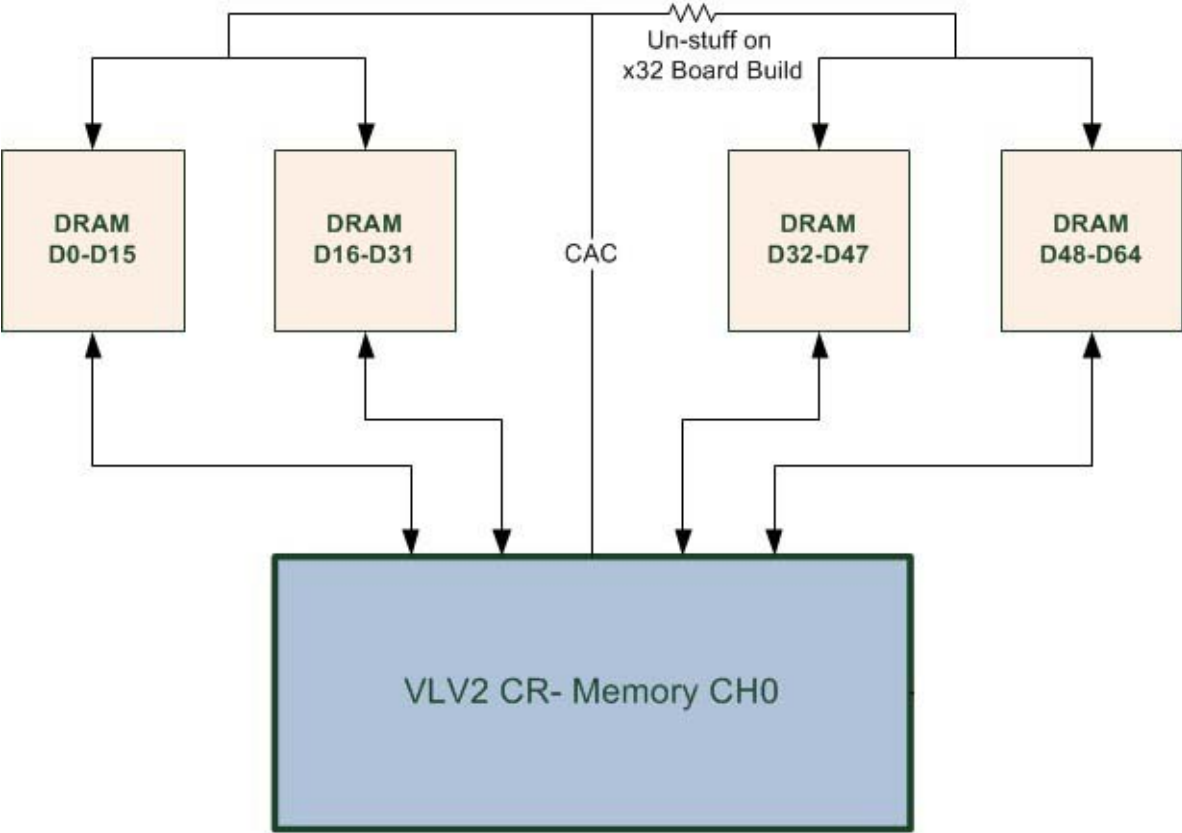
REV = 0.71

8 OF 8

IC

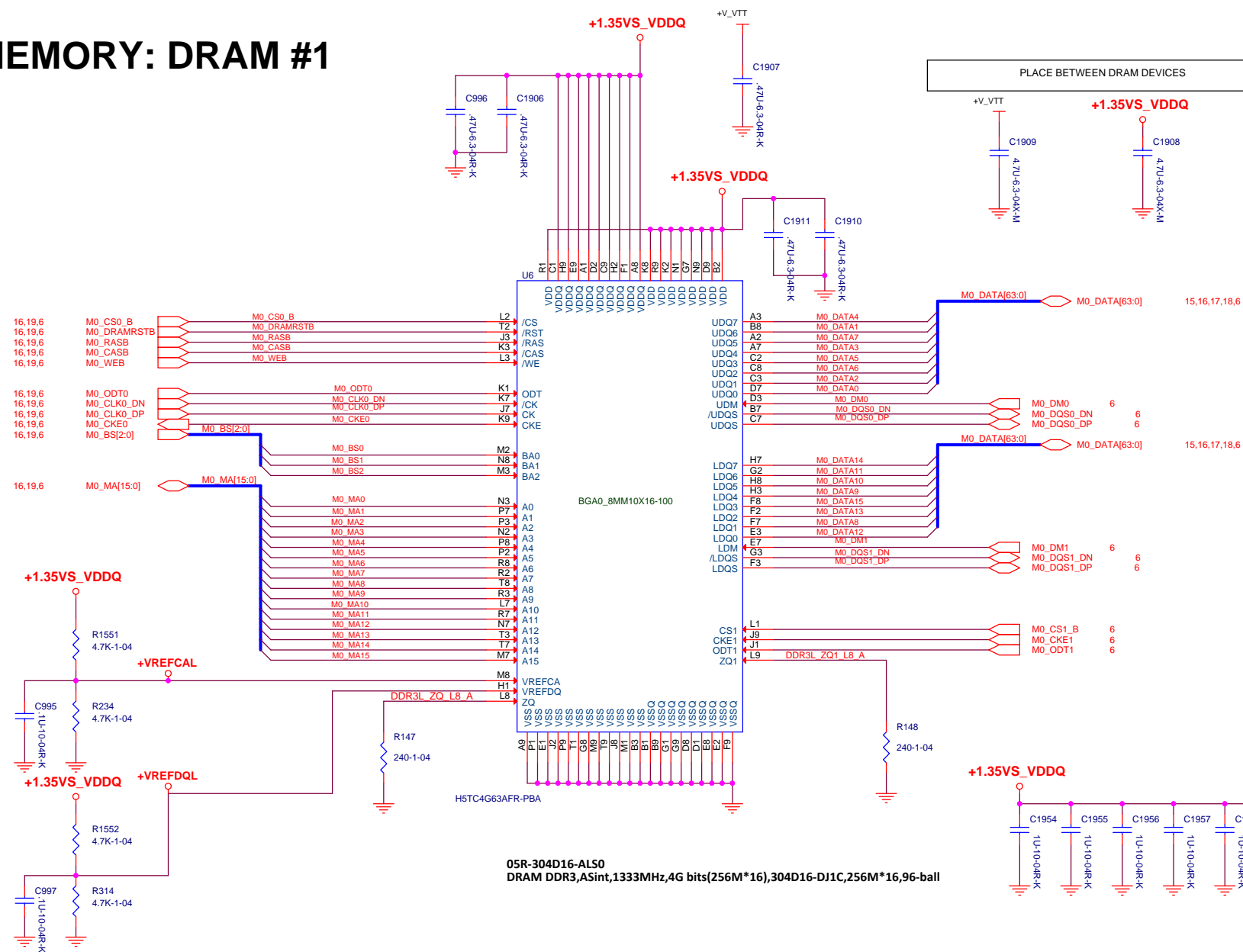
Title			SOC_POWER 2		
Size	A3	Document Number	S14CT01	Rev	A
Date:	Friday, February 19, 2016		Sheet	13	of 35

MEMORY: BLOCK DIAGRAM



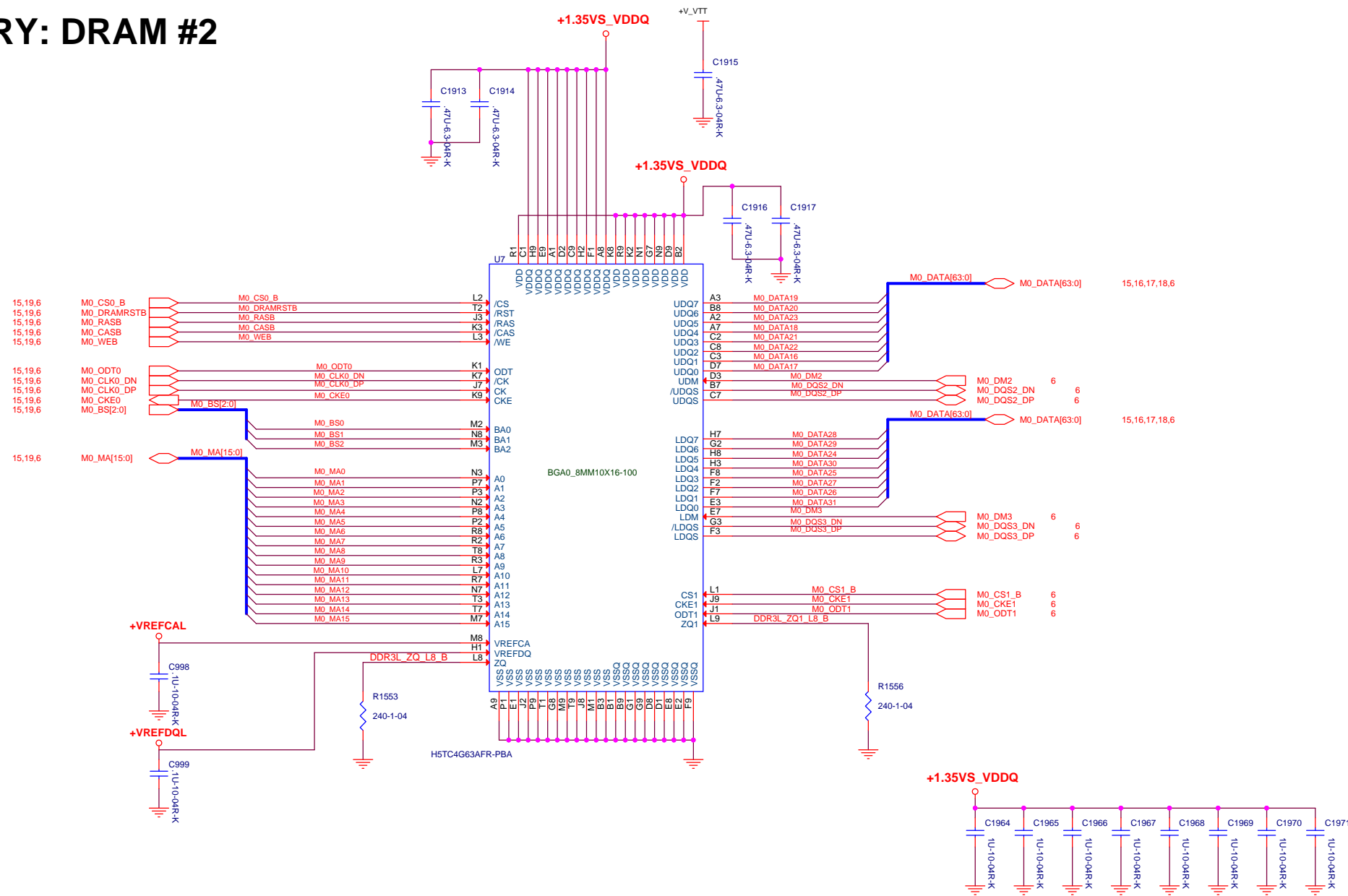
Title			
MEMORY_ BLOCK DIAGRAM			
Size	Document Number		Rev
A4	S14CT01		A
Date:	Friday, February 19, 2016		Sheet 14 of 35

MEMORY: DRAM #1

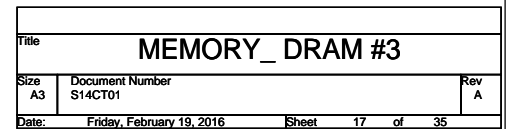


Title			MEMORY_ DRAM #1
Size	A3	Document Number	S14CT01
Date:	Friday, February 19, 2016	Sheet	15 of 35

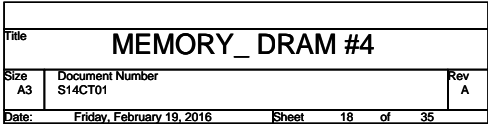
MEMORY: DRAM #2



UNSTUFF FOR X32 OPTION

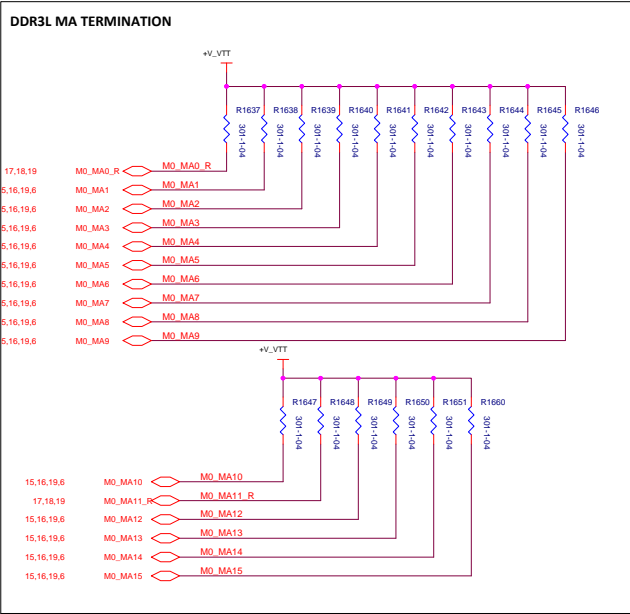
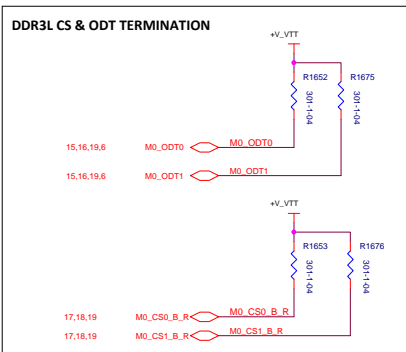
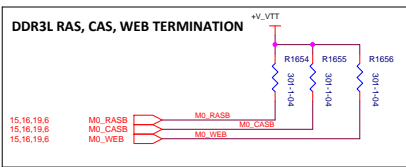
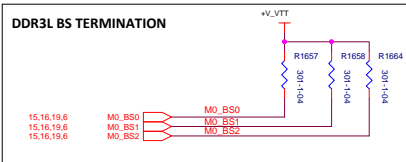
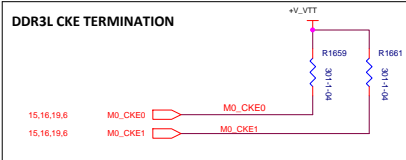


UNSTUFF FOR X32 OPTION



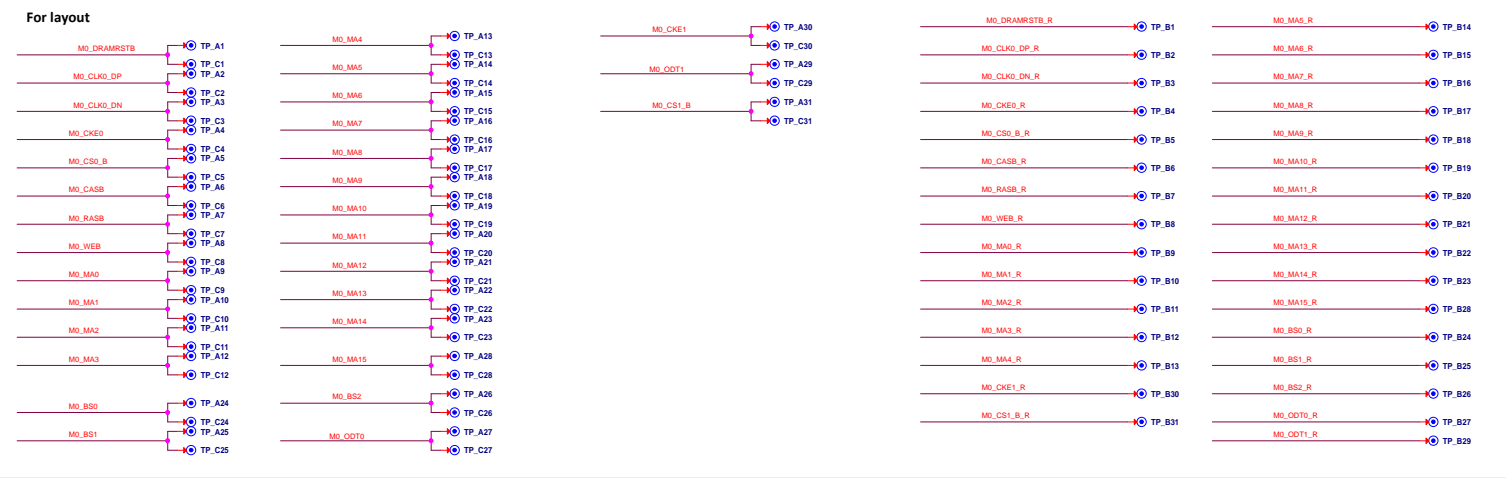
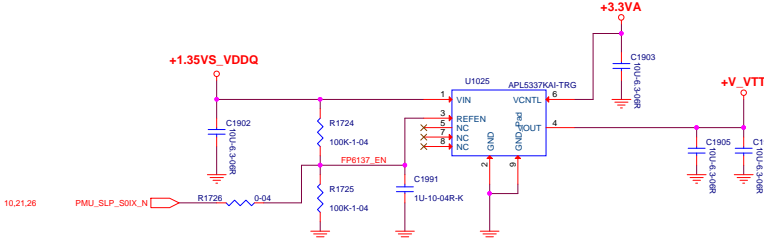
MEMORY: TERMINATION & X32/64 SCALABLE OPTIONS

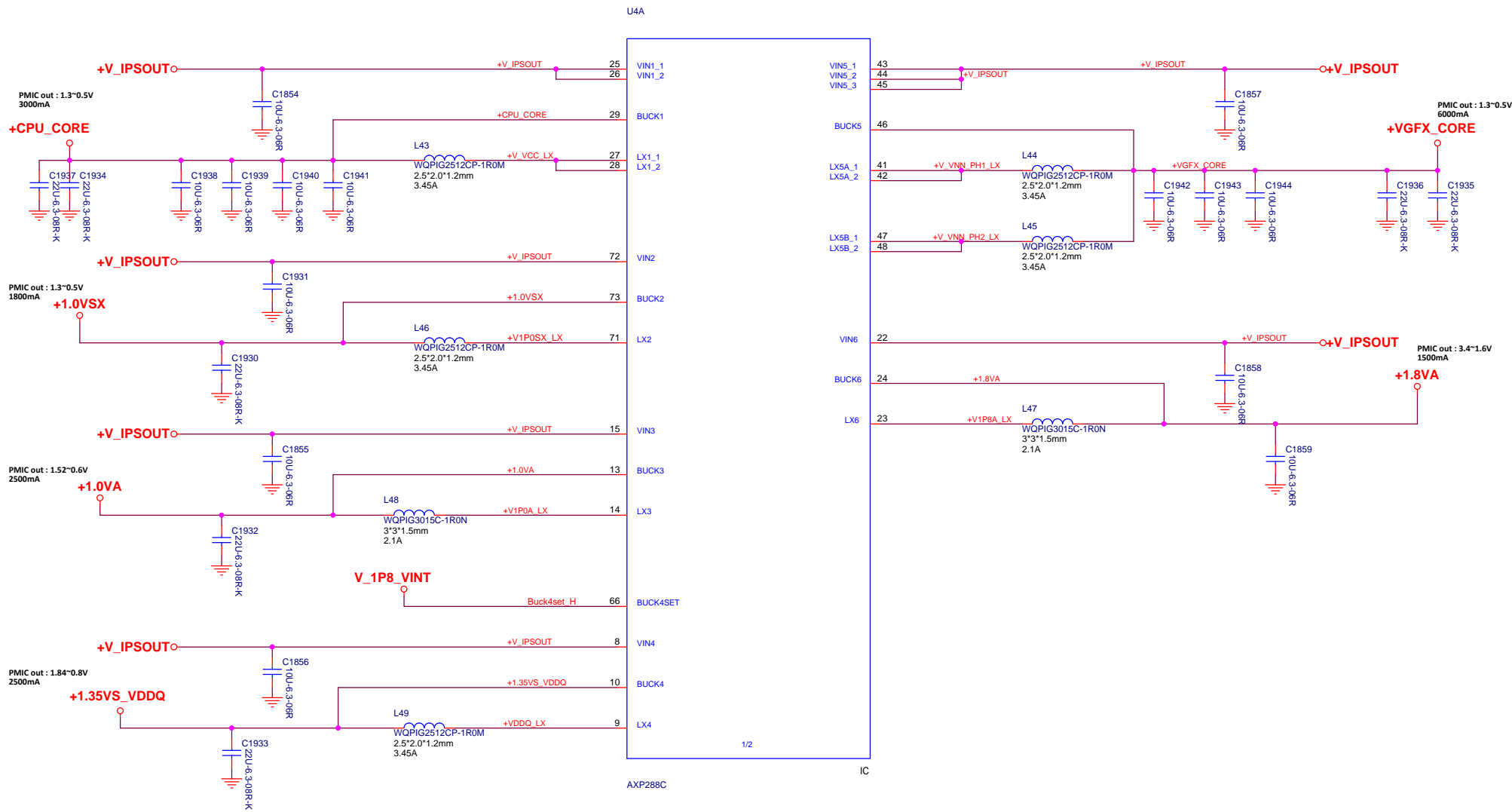
UNSTUFF FOR X32 OPTION

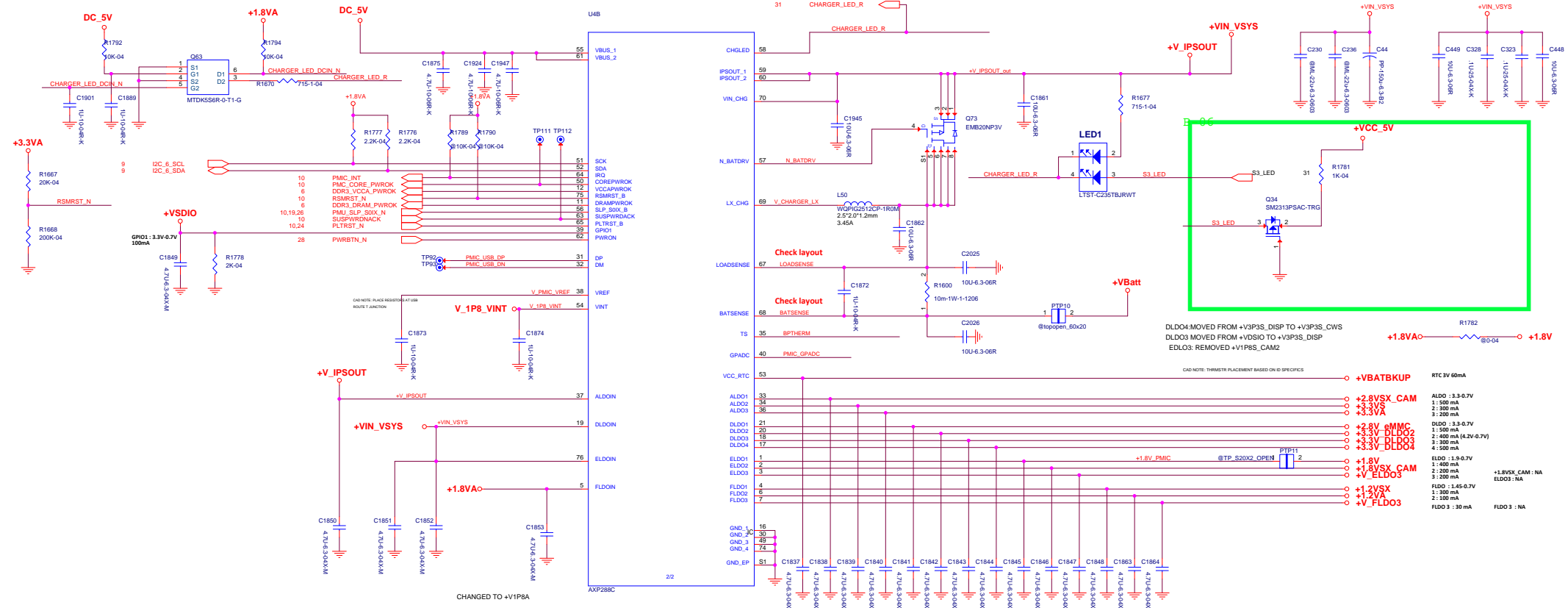


X32/64 RESISTOR OPTIONS

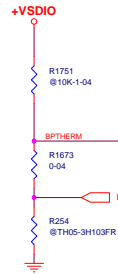
M0_DRAMRSTB	R1609	0-04	M0_DRAMRSTB_R	17,18
M0_CLK0_DP	R1610	0-04	M0_CLK0_DP_R	17,18
M0_CLK0_DN	R1611	0-04	M0_CLK0_DN_R	17,18
M0_CKE0	R1612	0-04	M0_CKE0_R	17,18
M0_CS0_B	R1613	0-04	M0_CS0_B_R	17,18,19
M0_CASB	R1614	0-04	M0_CASB_R	17,18
M0_RASB	R1616	0-04	M0_RASB_R	17,18
M0_WEB	R1615	0-04	M0_WEB_R	17,18
M0_MA0	R1617	0-04	M0_MA0_R	17,18,19
M0_MA1	R1618	0-04	M0_MA1_R	17,18
M0_MA2	R1620	0-04	M0_MA2_R	17,18
M0_MA3	R1619	0-04	M0_MA3_R	17,18
M0_MA4	R1621	0-04	M0_MA4_R	17,18
M0_MA5	R1622	0-04	M0_MA5_R	17,18
M0_MA6	R1624	0-04	M0_MA6_R	17,18
M0_MA7	R1623	0-04	M0_MA7_R	17,18
M0_MA8	R1625	0-04	M0_MA8_R	17,18
M0_MA9	R1626	0-04	M0_MA9_R	17,18
M0_MA10	R1628	0-04	M0_MA10_R	17,18
M0_MA11	R1627	0-04	M0_MA11_R	17,18,19
M0_MA12	R1629	0-04	M0_MA12_R	17,18
M0_MA13	R1630	0-04	M0_MA13_R	17,18
M0_MA14	R1632	0-04	M0_MA14_R	17,18
M0_MA15	R1635	0-04	M0_MA15_R	17,18
M0_BS0	R1631	0-04	M0_BS0_R	17,18
M0_BS1	R1633	0-04	M0_BS1_R	17,18
M0_BS2	R1634	0-04	M0_BS2_R	17,18
M0_ODT0	R1636	0-04	M0_ODT0_R	17,18
M0_CKE1	R1662	0-04	M0_CKE1_R	17,18
M0_ODT1	R1663	0-04	M0_ODT1_R	17,18
M0_CS1_B	R1669	0-04	M0_CS1_B_R	17,18,19



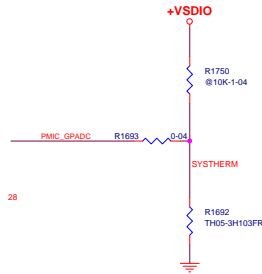




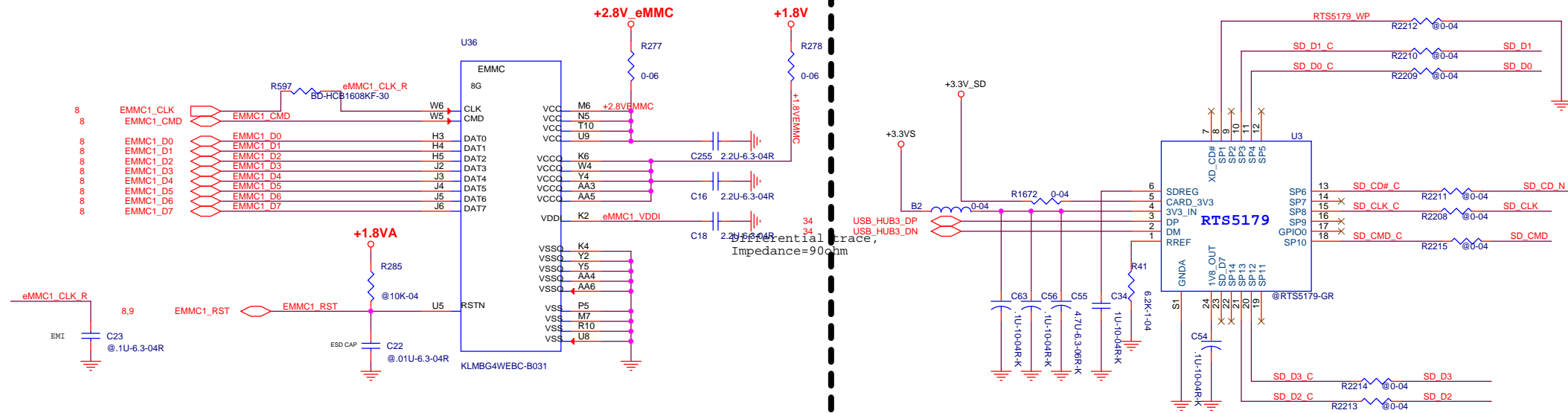
for Battery



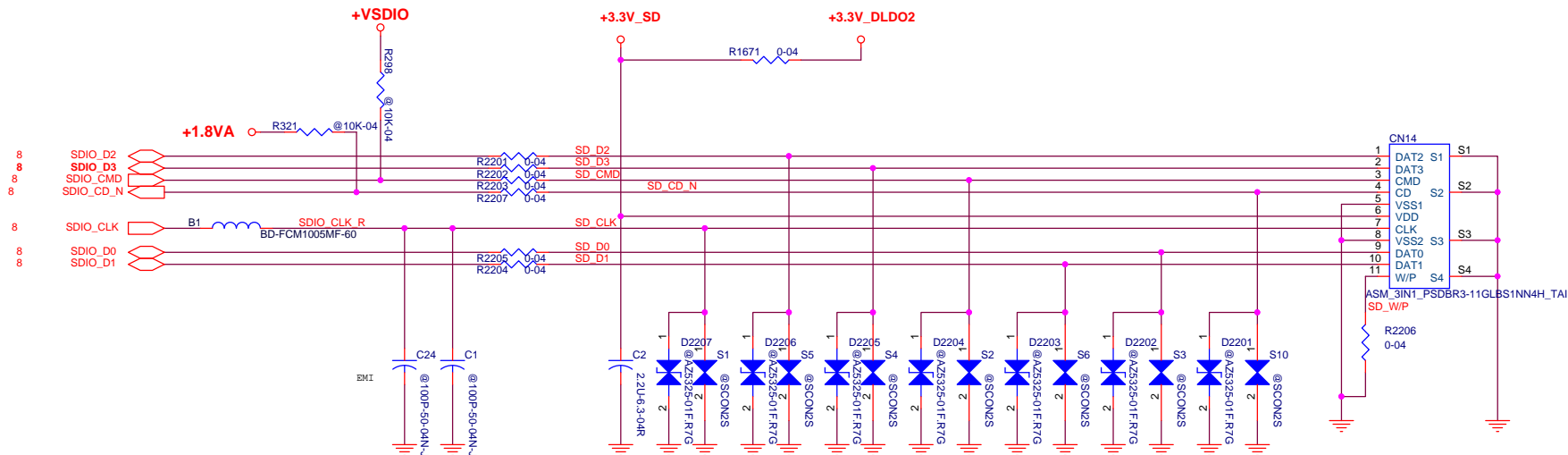
for thermal



EMMC

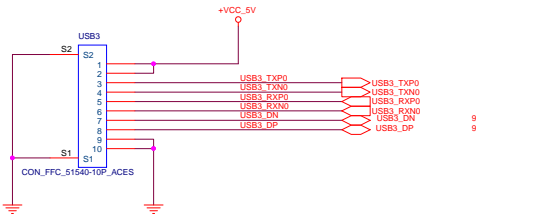


Micro-SD card



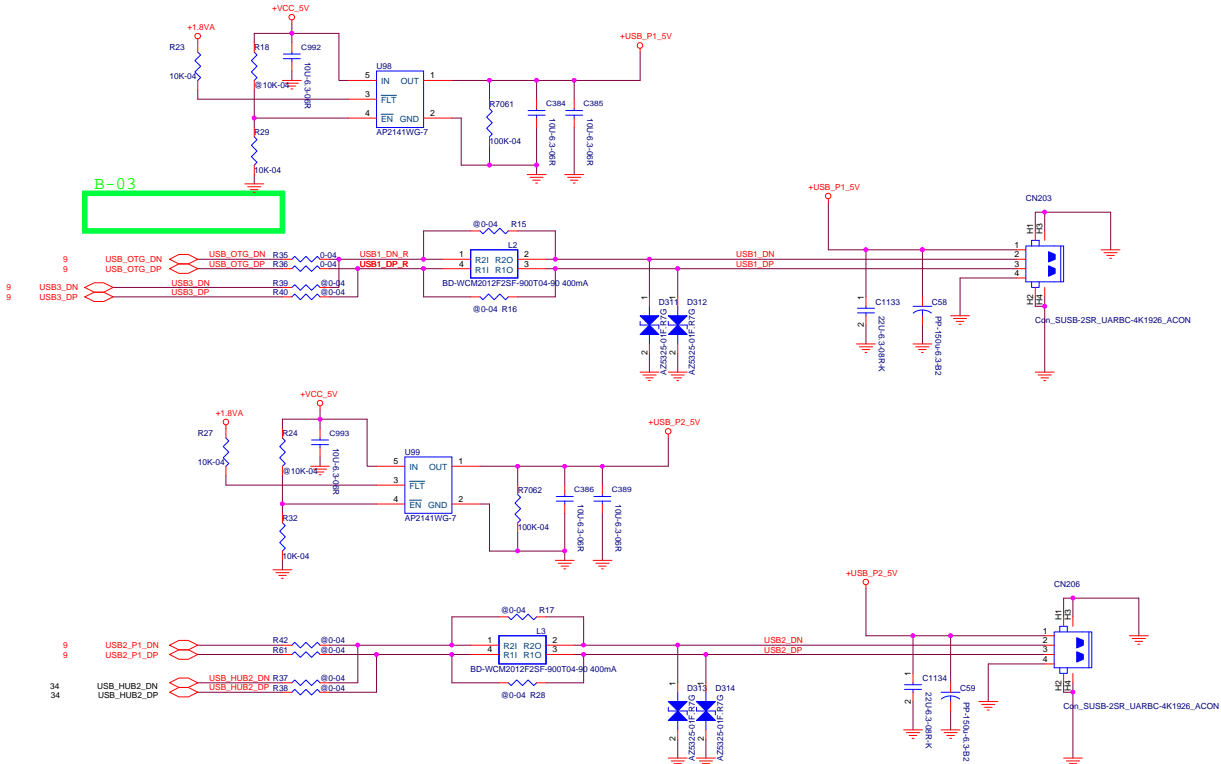
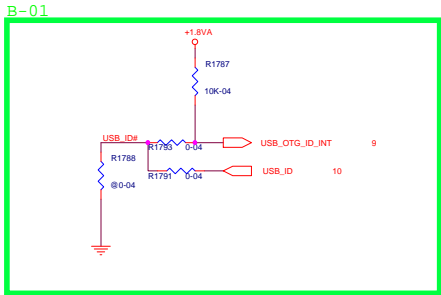
Title			eMMC/Micro SD
Size	Document Number	Rev	
A3	S14CT01	A	
Date:	Friday, February 19, 2016	Sheet	22 of 35

USB

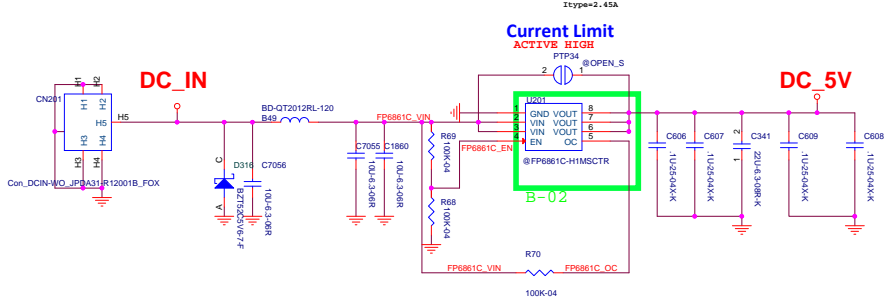


USB OTG detect

Function	USB_OTG_ID	USB_OTG_Detect#	USB_OTG_ID_INT	USB 5V
HOST	L	X	L	5V
OTG	X	L	H	0V
N/A	X	H	H	0V

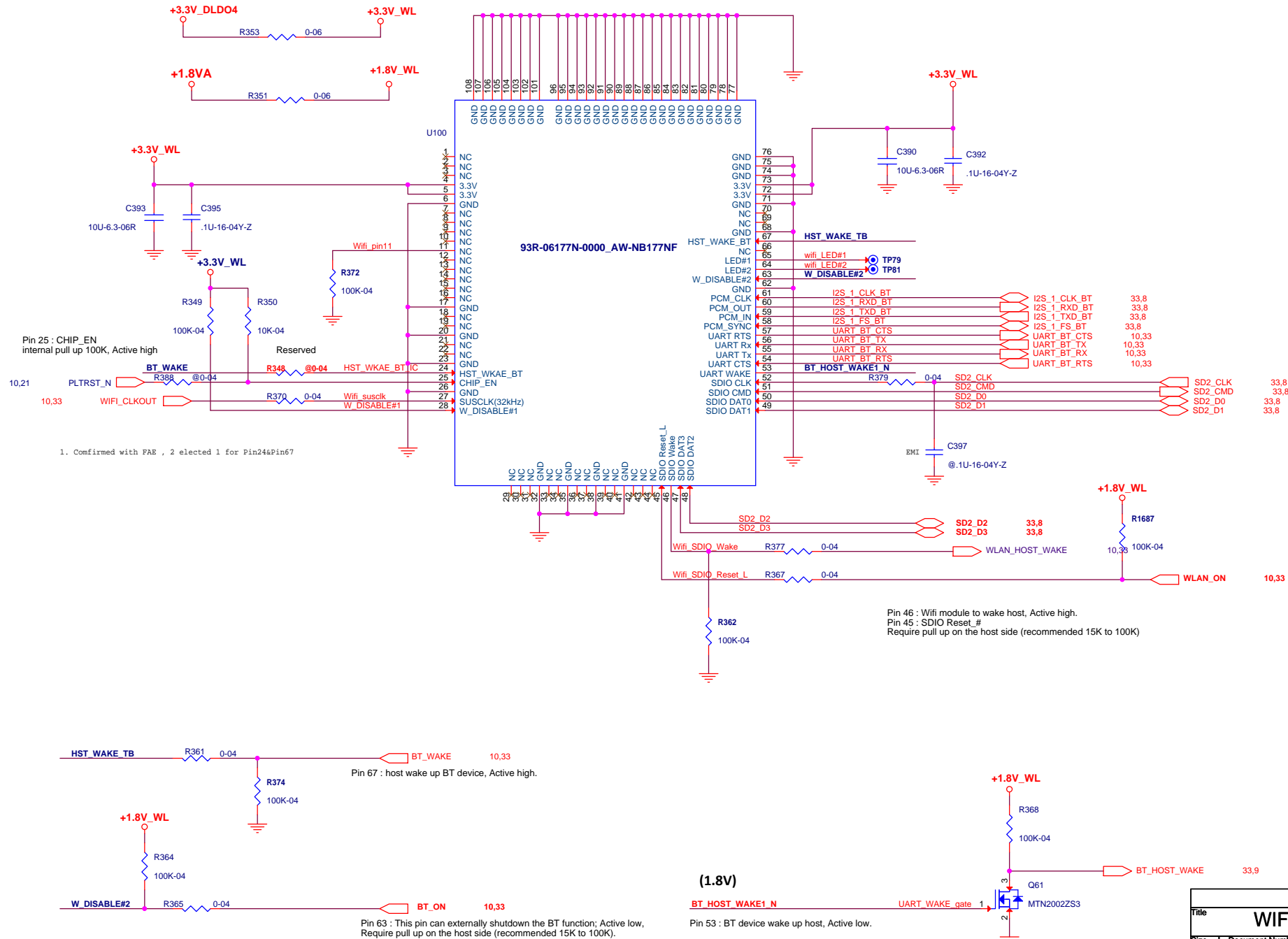


DC-in Power

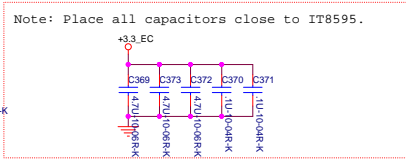
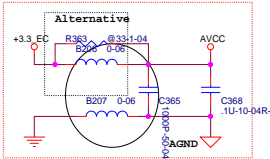
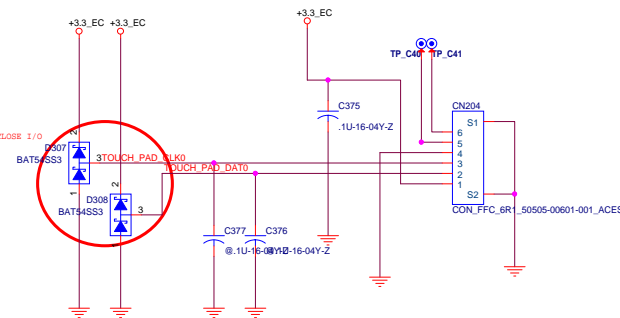
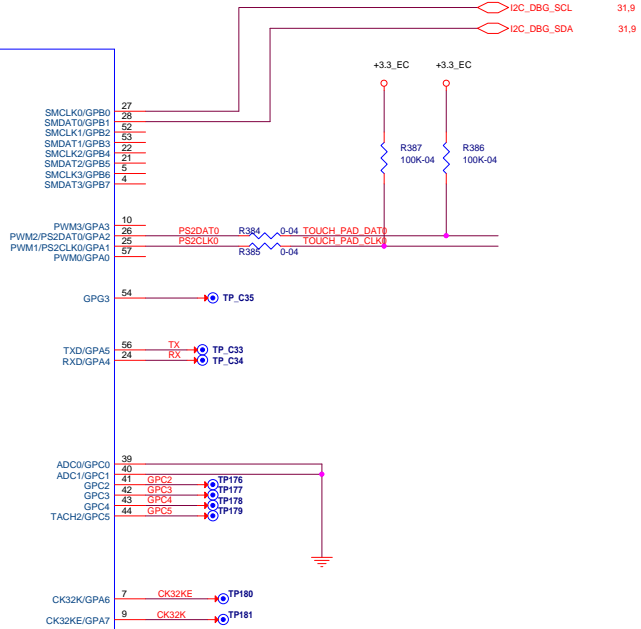
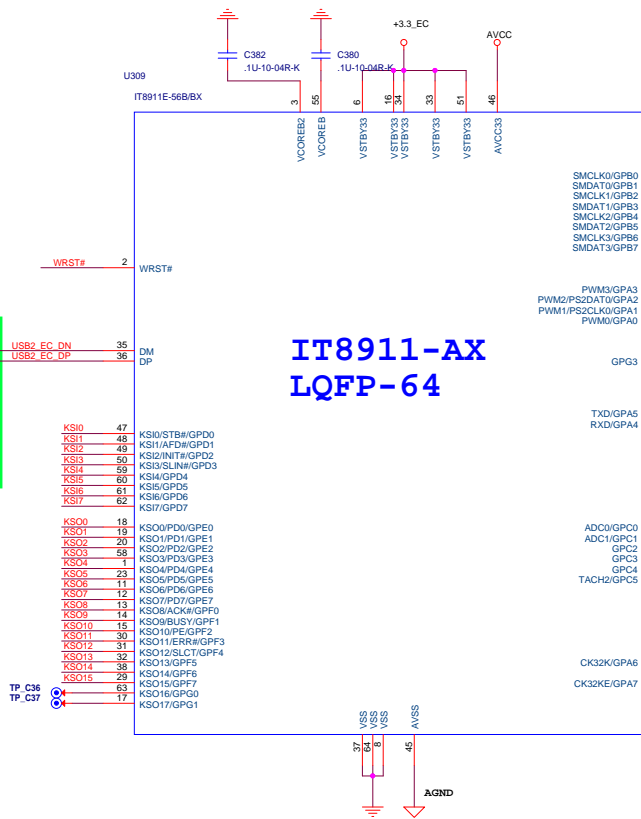
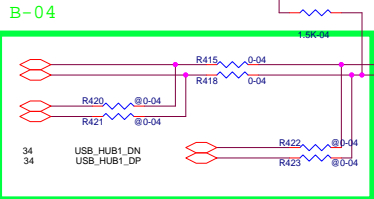
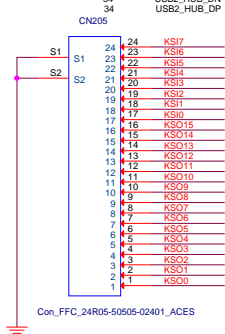
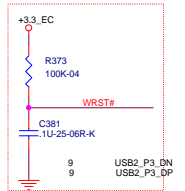
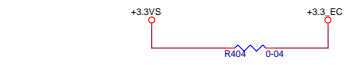


WIFI+BT(AW-NB177NF)

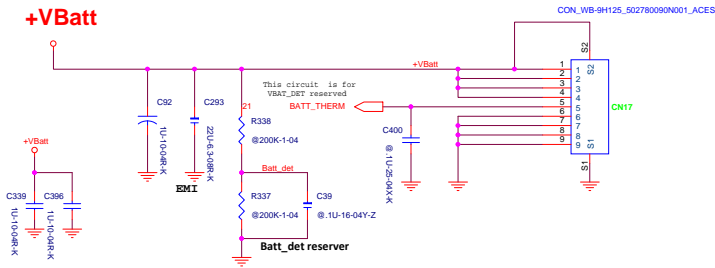
93R-06177N-0000



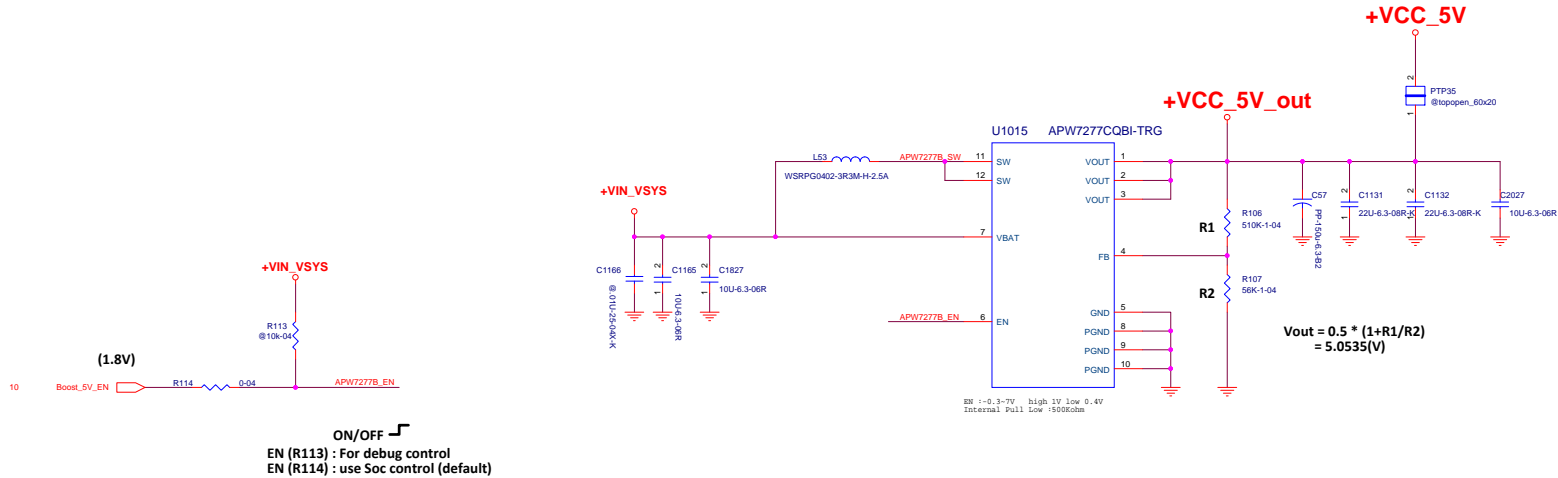
Title					WIFI+BT(AW-NB177NF)				
Size	Document Number								Rev
A3	S14CT01								A
Date:	Friday, February 19, 2016				Sheet	24	of	35	



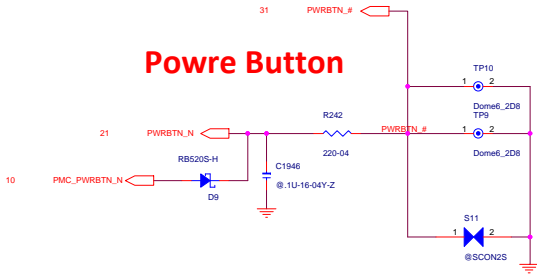
Battery connector



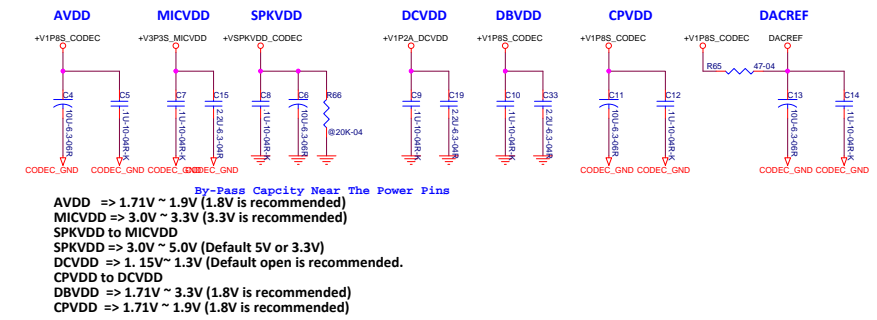
Boost 5V



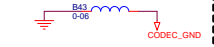
Powre Button



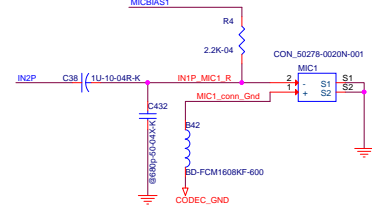
Codec Power Plan



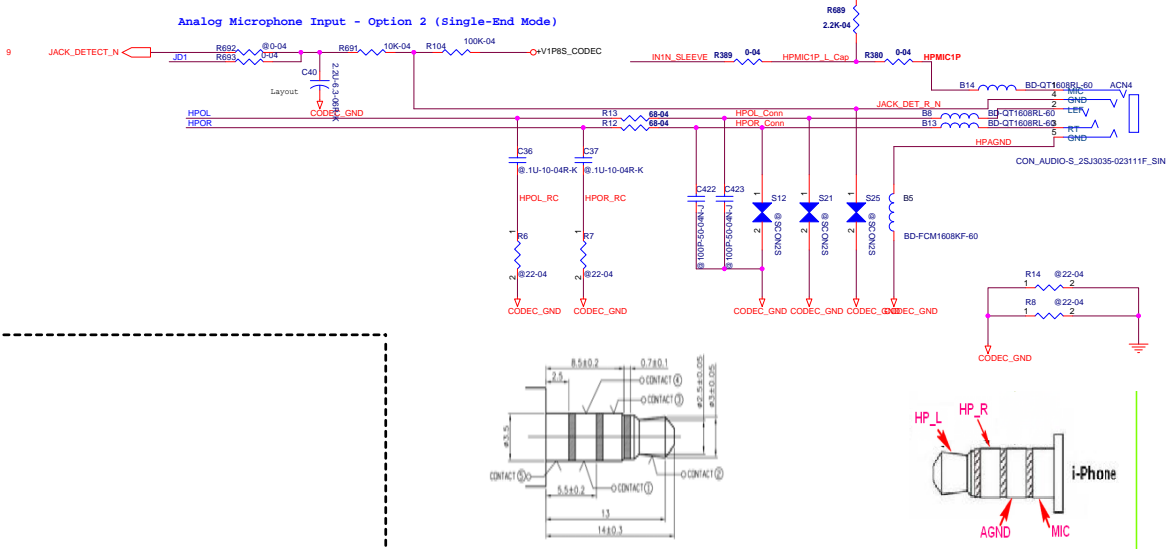
Codec Gound



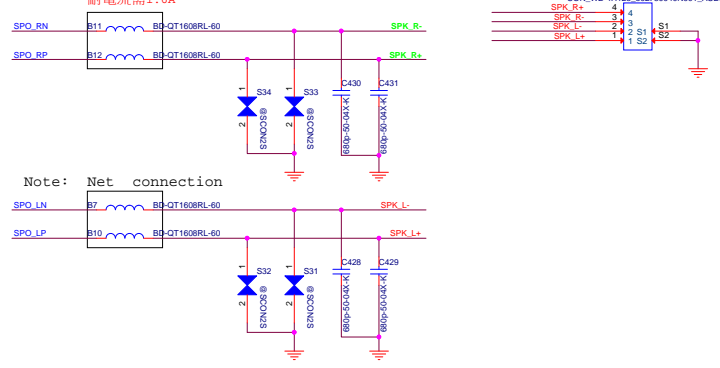
MIC



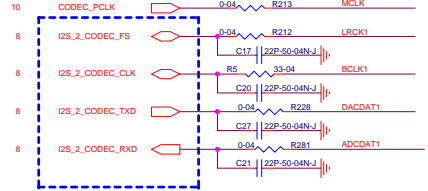
EarPHONE Jack



Speaker - Stereo Mode (4ohm 1.5W)

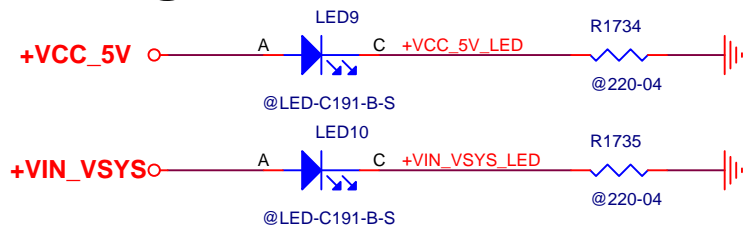


I2S2 Interface from Soc

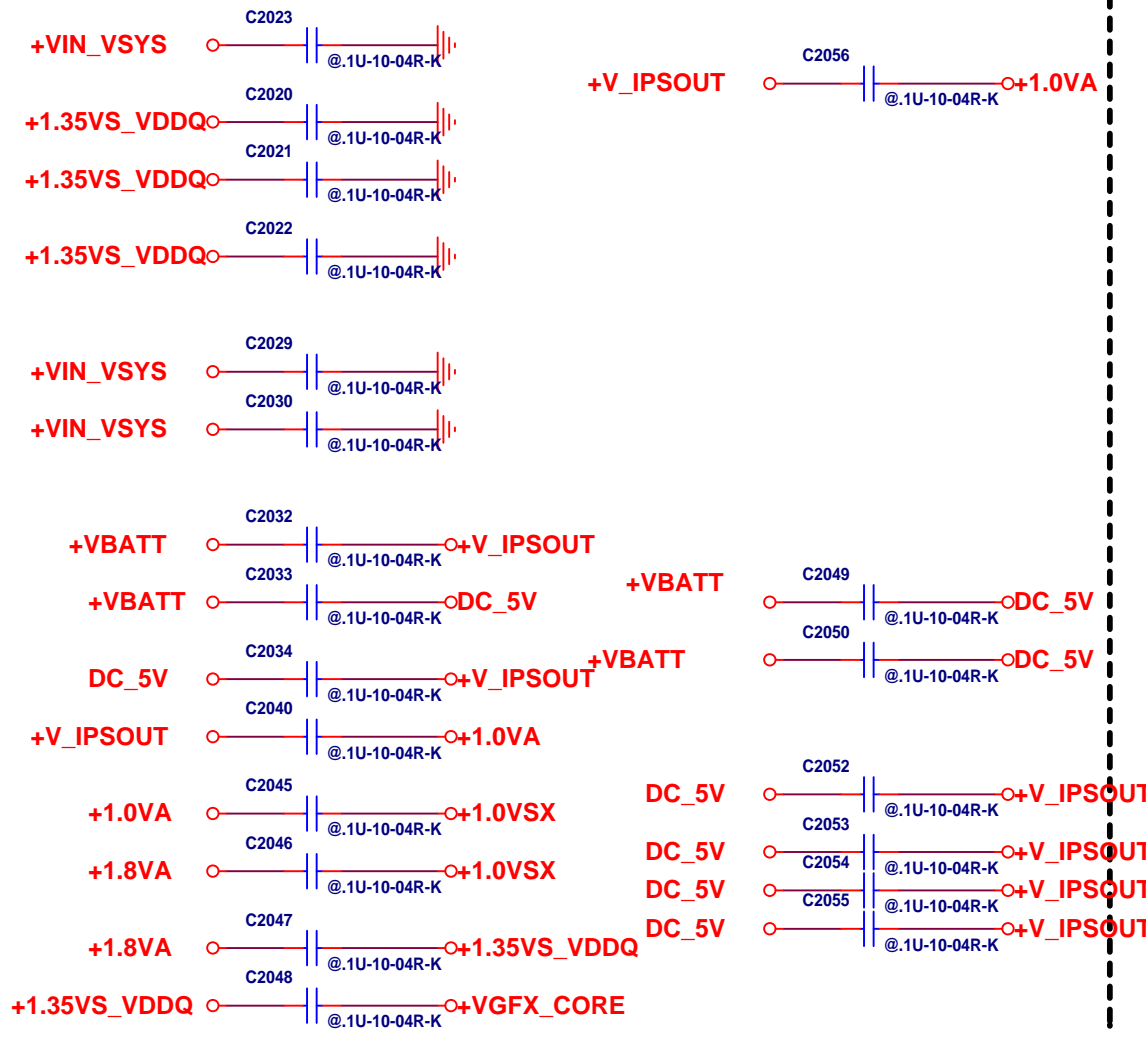


I2S Audio(ALC-5645)		
Size A2	Document Number 514CT01	Rev A
Date	Friday, February 19, 2016	Sheet 29 of 36

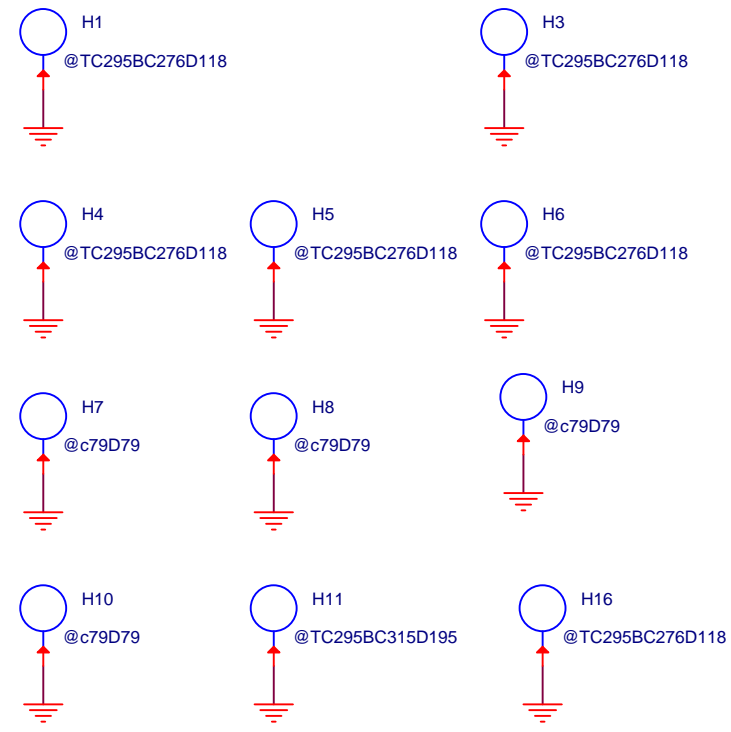
Debug LED



EMI

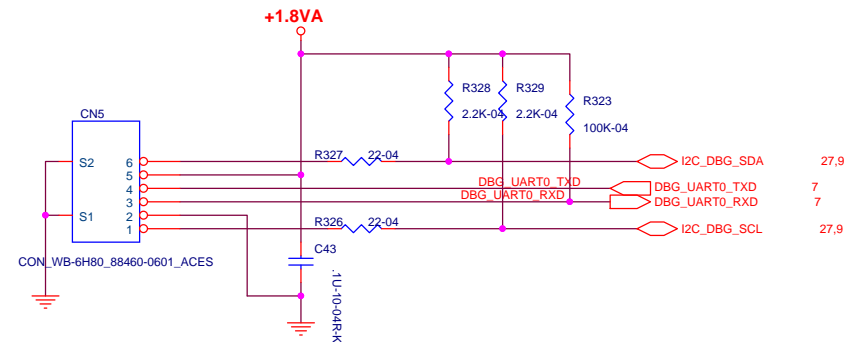


Hole

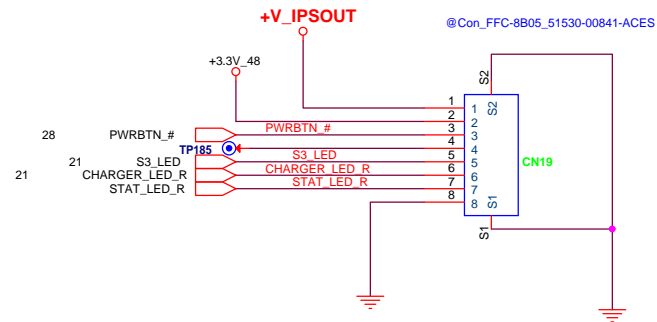
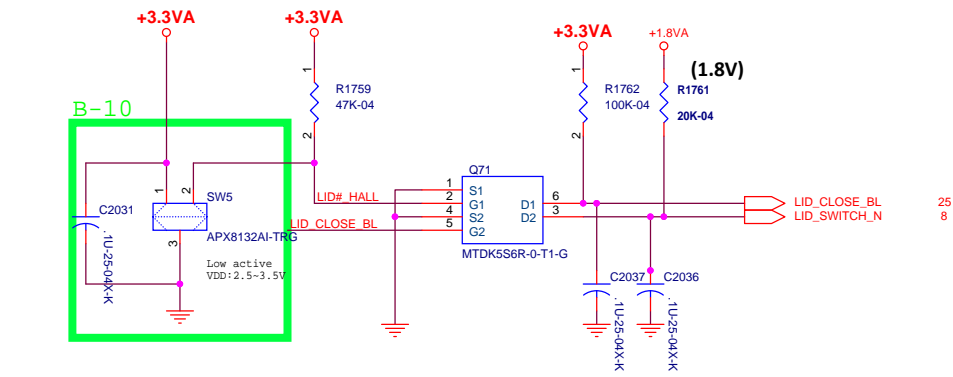


Title				Debug Led/EMI/SCREW			
Size		Document Number					Rev
A4		S14CT01					A
Date:		Friday, February 19, 2016			Sheet	30	of 35

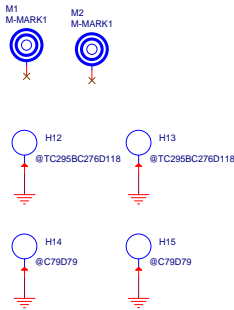
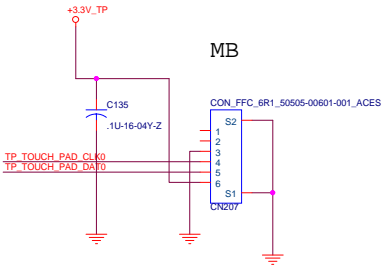
Debug connector



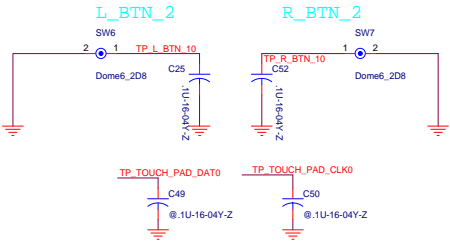
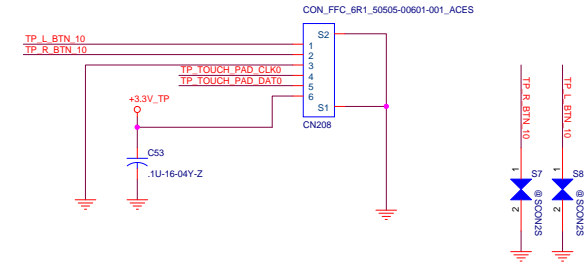
Lid Switch



Touch Pad



Touch Pad



9

1

C

1

(a)

3

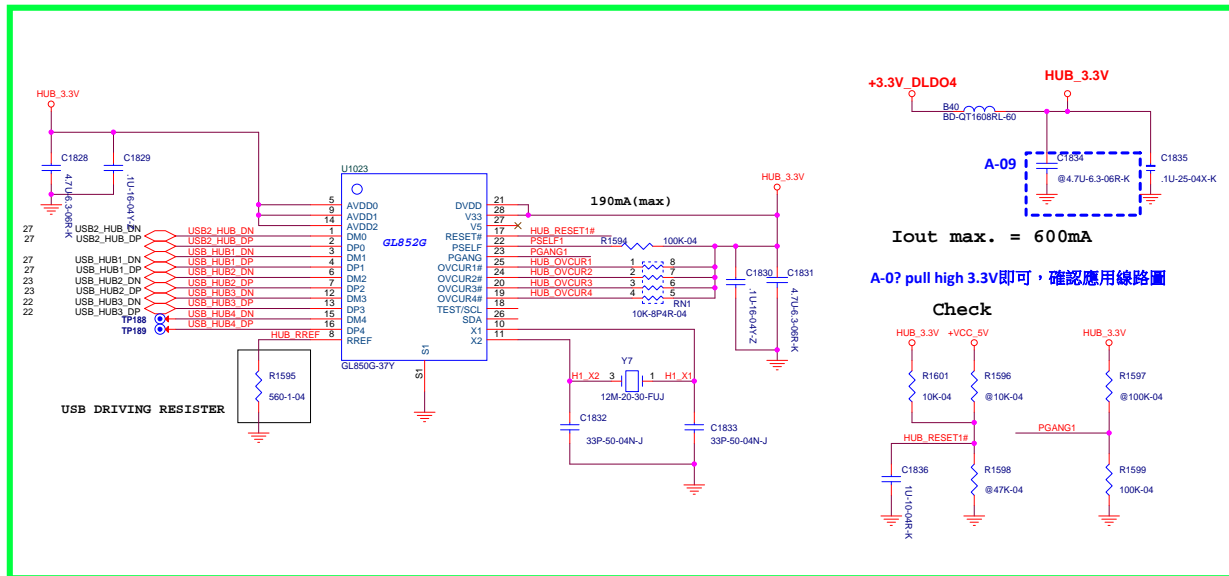
A

1

Title			
WIFI+BT(AP6476)			
Size	Document Number	Rev	
C	<Doc>	<Rev Code>	
Date:	Friday, February 19, 2016	Sheet	33 of 35

USB Hub (1 to 4 ch)

B-05



History

- B-01 PULL HGH THE USB ID PIN FOR AC MODE ISSUE
- B-02 REMOVE THE DC-IN CURRENT LIMIT
- B-03 B-04 B-05 CO-LAY USB HUB for OTG PORT BUG
- B-06 FOR S3 LED FUNCTION
- B-07 B-08 FOR eDP FUNCTION ON BIOS MODE
- B-09 FOR HDMI DESIGN RULE
- B-10 CHANGE LID pin define